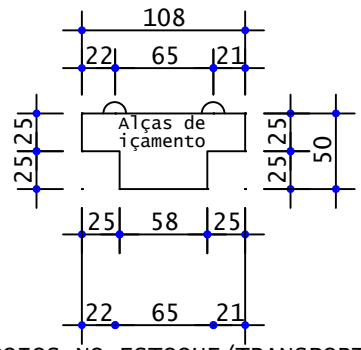
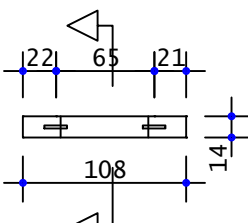


VP24

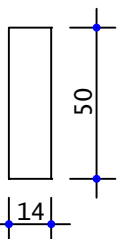
ELEVAÇÃO



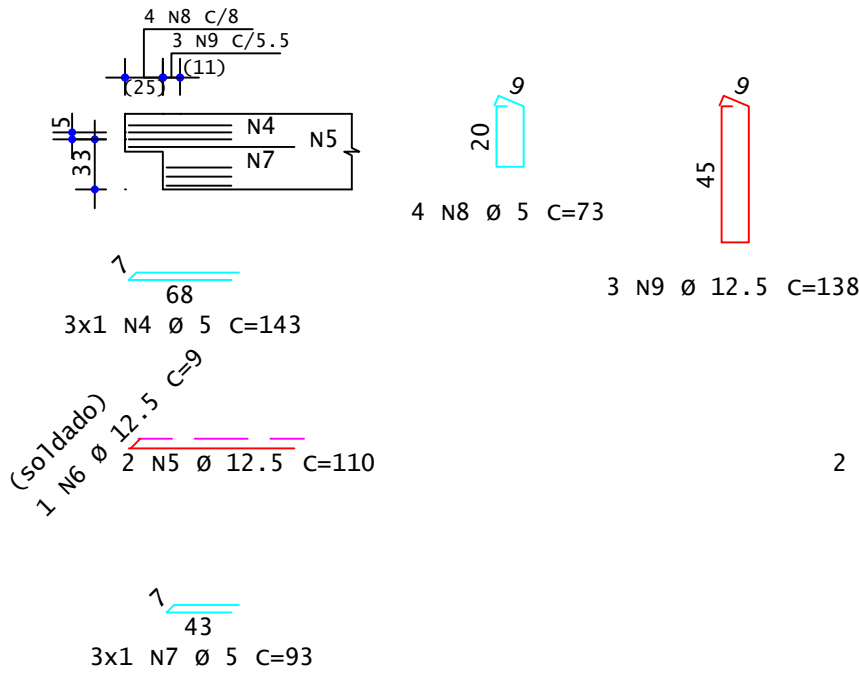
PLANTA



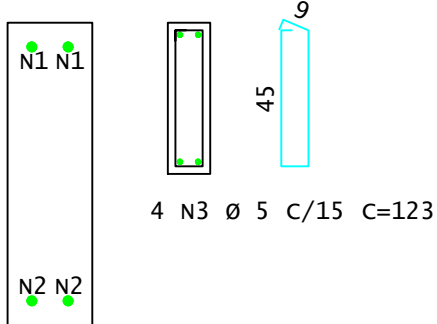
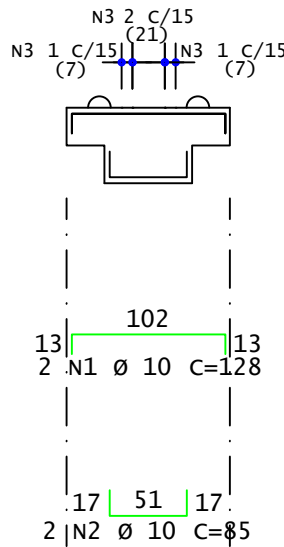
SEÇÃO



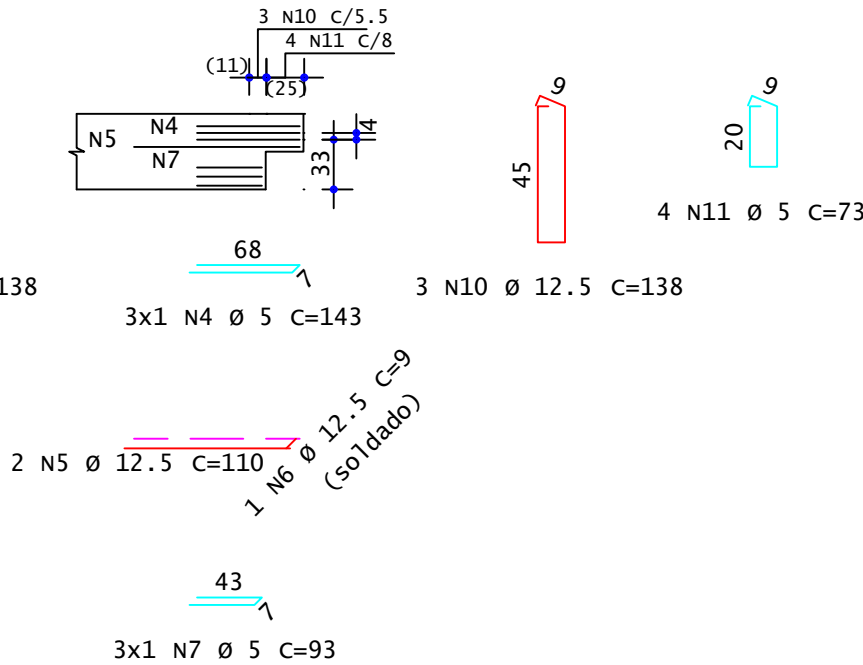
DETALHE INICIAL



VP24



DETALHE FINAL



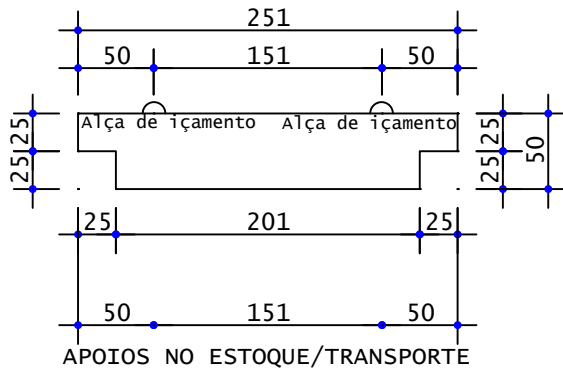
Pavimento	Quant	Volume unit (m³)	Volume total (m³)
Primeiro Lance(1x)	1	0.058	0.058
Térreo(1x)	1	0.058	0.058
TOTAIS	2		0.116

AÇO	POS	BIT  mm	QUANT	COMPRIMENTO	
				UNIT cm	TOTAL cm
VP24 (X2)					
50A	1	10	4	128	512
50A	2	10	4	85	340
60A	3	5	8	123	984
60A	4	5	12	143	1716
50A	5	12.5	8	110	880
50A	6	12.5	4	9	36
60A	7	5	12	93	1116
60A	8	5	8	73	584
50A	9	12.5	6	138	828
50A	10	12.5	6	138	828
60A	11	5	8	73	584

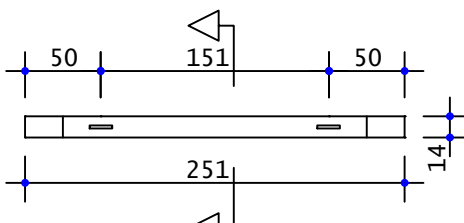
RESUMO DE AÇO			
AÇO	BIT mm	COMPR m	PESO kgf
60A	5	50	8
50A	10	9	5
50A	12.5	26	25
Peso Total	60A =		8 kgf
Peso Total	50A =		30 kgf

VP25

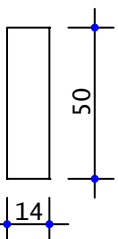
ELEVAÇÃO



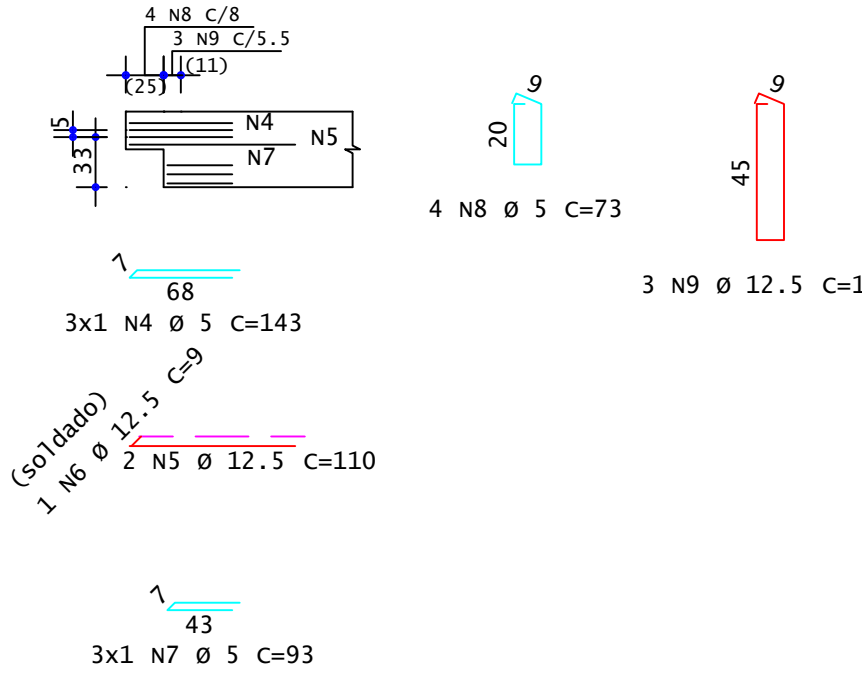
PLANTA



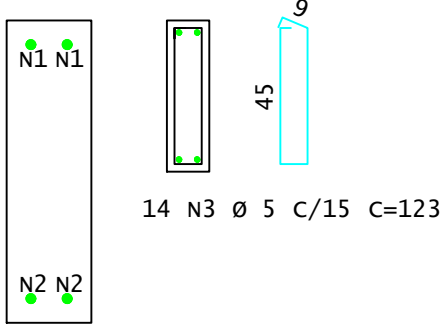
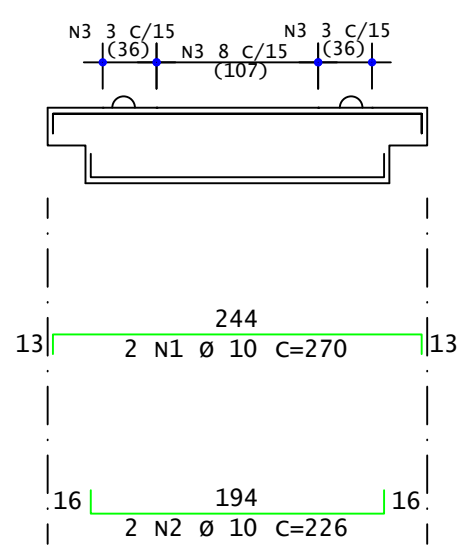
SEÇÃO



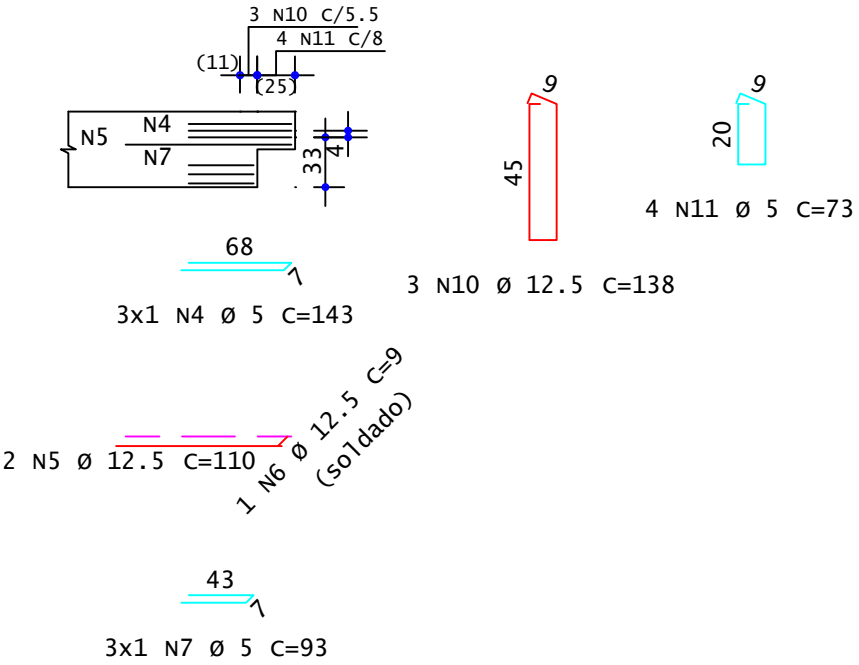
DETALHE INICIAL



VP25



DETALHE FINAL



Pavimento	Quant	Volume unit (m³)	Volume total (m³)
Primeiro Lance(1x)	1	0.158	0.158
TOTAIS	1		0.158

AÇO	POS	BIT	QUANT	COMPRIMENTO	
				UNIT	TOTAL
VP25					
50A	1	10	2	270	540
50A	2	10	2	226	452
60A	3	5	14	123	1722
60A	4	5	6	143	858
50A	5	12.5	4	110	440
50A	6	12.5	2	9	18
60A	7	5	6	93	558
60A	8	5	4	73	292
50A	9	12.5	3	138	414
50A	10	12.5	3	138	414
60A	11	5	4	73	292

RESUMO DE AÇO			
AÇO	BIT mm	COMPR m	PESO kgf
60A	5	37	6
50A	10	10	6
50A	12.5	13	12
Peso Total	60A =		6 kgf
Peso Total	50A =		19 kgf

É PROIBIDA A REPRODUÇÃO DESTE PROJETO, SEM A AUTORIZAÇÃO DO AUTOR  
LEIS Nº 5194 DE 24/12/1966 E Nº 9610 DE 19/02/98

EMPRESA CONTRATADA:	RESPONSÁVEL TÉCNICO:	PROPRIETÁRIO:
	LUIZ FERNANDO C. MEGIOLARO ENGENHEIRO CIVIL CREA - PR 179004/D	PREFEITURA MUNICIPAL DE MARMELEIRO CNPJ: 76.205.665/0001-01
OBRA/ENDEREÇO:		
GINÁSIO EMEF PERSEVERANÇA		
RUA DAS GRAPIAS, 160, BAIRRO ARAUCÁRIA, MARMELEIRO - PR. CEP 85615-000		
PROJETO:	DES.	LUIZ
PROJETO ESTRUTURAL - PRÉ MOLDADO	ESCALA INDICADA	
	DATA	OUT/2025
CONTEÚDO DA PRANCHA:	FOLHA	REVISÃO
DETALHAMENTO VIGAS;	14/16	01

KOLF SERVIÇOS DE ENGENHARIA  
CNPJ: 07.555.412/0001-37  
RUA FREI EVERALDO, 5555, SALA 1  
CHOPINZINHO - PR - 85560-000  
(46)9 9908-2448  
GABRIEL@COLFERAI.ENG.BR